

[< Back to home](#)

Canvas Integration for Teachers and Students

Overview

When you integrate Pear Deck into Canvas, you turn a Pear Deck presentation Session into an Assignment. This gives your students in Canvas instant access to the Session without needing the Join Code or Link like they do in a traditional Pear Deck Session. Your students' responses are saved in your [Sessions](#) menu like always.



This integration is available only to users who have a district or school-wide subscription to Pear Deck at this time. Please ask your school's Pear Deck administrator if you are eligible, or reach out to help@peardeck.com if you have questions. Administrators, please read [this article](#) to learn how to install the Pear Deck integration into Canvas so teachers can access it.

- [Start a Pear Deck assignment \(Teachers\)](#)
- [Have students complete your assignment](#)
- [Grade your assignment](#)

Start a Pear Deck assignment (Teachers)

1. Have an interactive Pear Deck for Google Slides or PowerPoint Online Slides file ready to present. The presentation files are saved automatically in your Google Drive or OneDrive and

you will select the one you want to present to students in Step 10.

2. Open [Canvas](#).
3. Go to *Assignments*.
4. Click on *+Assignment*.

5. Customize your assignment. To add an interactive Pear Deck presentation, scroll down to *Submission Type*.

6. Next to *Submission Type*, open the drop-down menu and select *External Tool*. Then click *Find* to search for Pear Deck:

Settings

Points

Assignment Group

Display Grade as

Do not count this assignment towards the final grade

Submission Type

External Tool Options

Enter or find an External Tool URL

Load This Tool In A New Tab

The Canvas Administrator must first install Pear Deck in order for it to appear in this list. After it is installed, you will see it in the list of External Tools that appears when you click on the *Find* button.

- In the list of External Tools, click on Pear Deck and then click on *Select*.

Settings

Points

Assignment Group

Display Grade as

Do not count this assignment towards the final grade

Submission Type

External Tool Options

Enter or find an External Tool URL

Load This Tool In A New Tab

Configure External Tool

engage every student in your room, every day!

Pear Deck

With Pear Deck, launch interactive presentations to engage every student!

Quizzes 2

Quizzes LTI is an LTI Assignment based solution for delivering LMS-based quizzes

URL:

Load in a new tab

- The Pear Deck URL appears in the External URL field of the Submission Type section.
- When you are done customizing your assignment, scroll down to the bottom of the page and click the *Save and Publish* button.
- Click *Select a file from Drive*. The first time you present a Pear Deck file in Canvas, you will be required to log into Pear Deck. You may log into your [Pear Deck Home](https://help.peardeck.com/canvas) in another tab to

assure that this works:

11. The file picker screen opens. Select the Pear Deck for Google Slides or PowerPoint Online Slides presentation you want students to complete.



12. Choose your Lesson Mode. One of the Presenter Views (Projector or Dashboard) opens for you in Canvas, depending on the Lesson Mode you choose:
 - a. [Student-Paced Mode](#) (asynchronous; recommended for this integration): For the teacher, the private Dashboard View opens so you can see students' names next to their responses in real time. When students open this assignment, they get simple navigation controls on their Student View, allowing them to scroll through the slides in your

presentation Session and respond to the interactive questions. This mode also allows students to click the *Submit Work* button at the end of the assignment to officially close it.

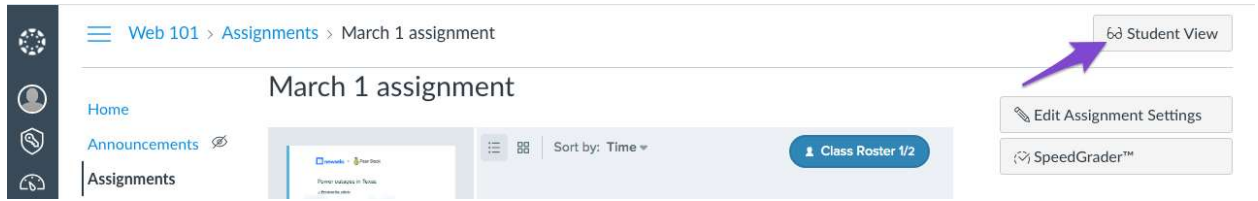
- b. Instructor-Paced Mode (synchronous): The Projector View opens and responses are anonymous by default on this View. The Student View of the slides syncs up to your slide on the Projector View, so you will need to click through the slides so students can see them and respond to interactive questions.
13. In either view, you can use the Navigation Bar controls to scroll through the slides, show responses, open the More Actions (3-dots) menu to change the Lesson Mode, open the Dashboard in a new window, and more.

Have students complete your assignment

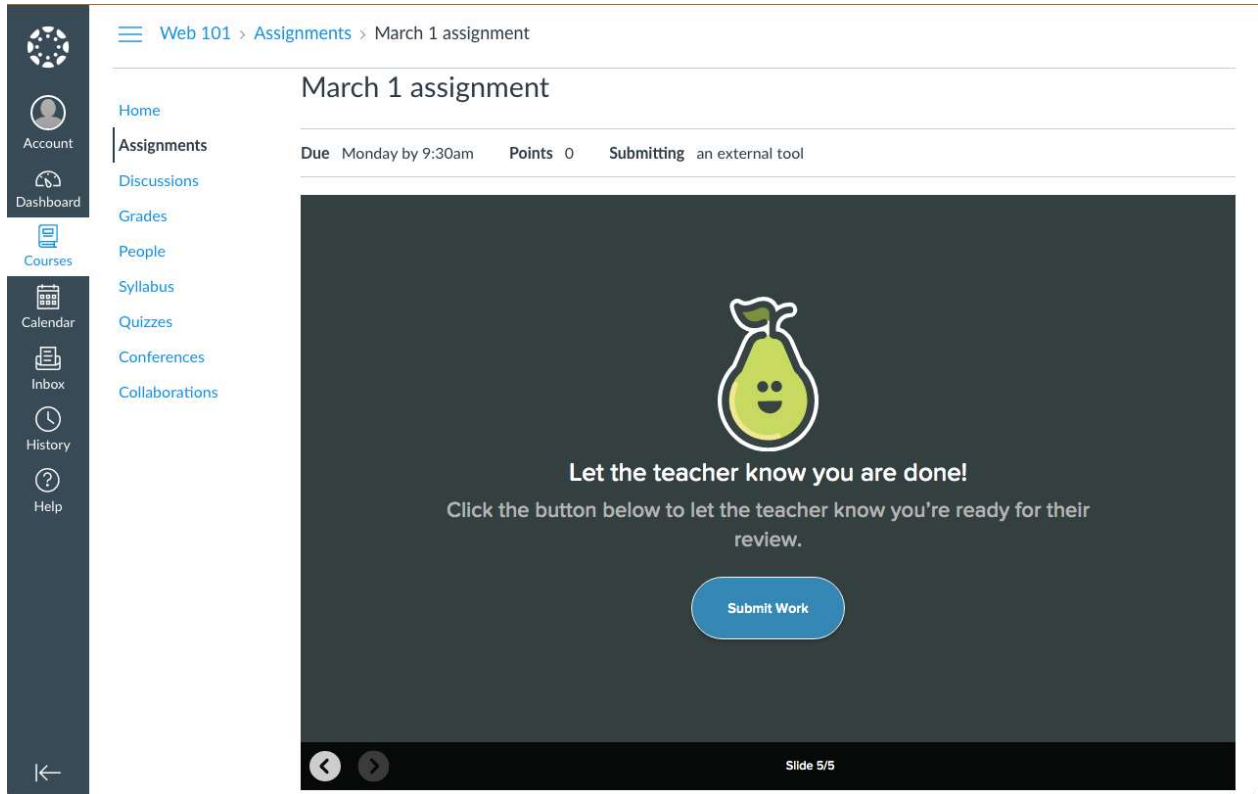
Here's what students do:

1. Open Canvas.
2. Go to *Courses*.
3. Select the Assignment the teacher created.
4. Scroll through the slides and respond to interactive questions. No matter what the Session Mode is, your responses are saved as always in the teacher's [Pear Deck Home Sessions](#).
5. **If the Session is in Student-Paced Mode**, you can select *Submit Work* to turn in and close your assignment on the final slide.

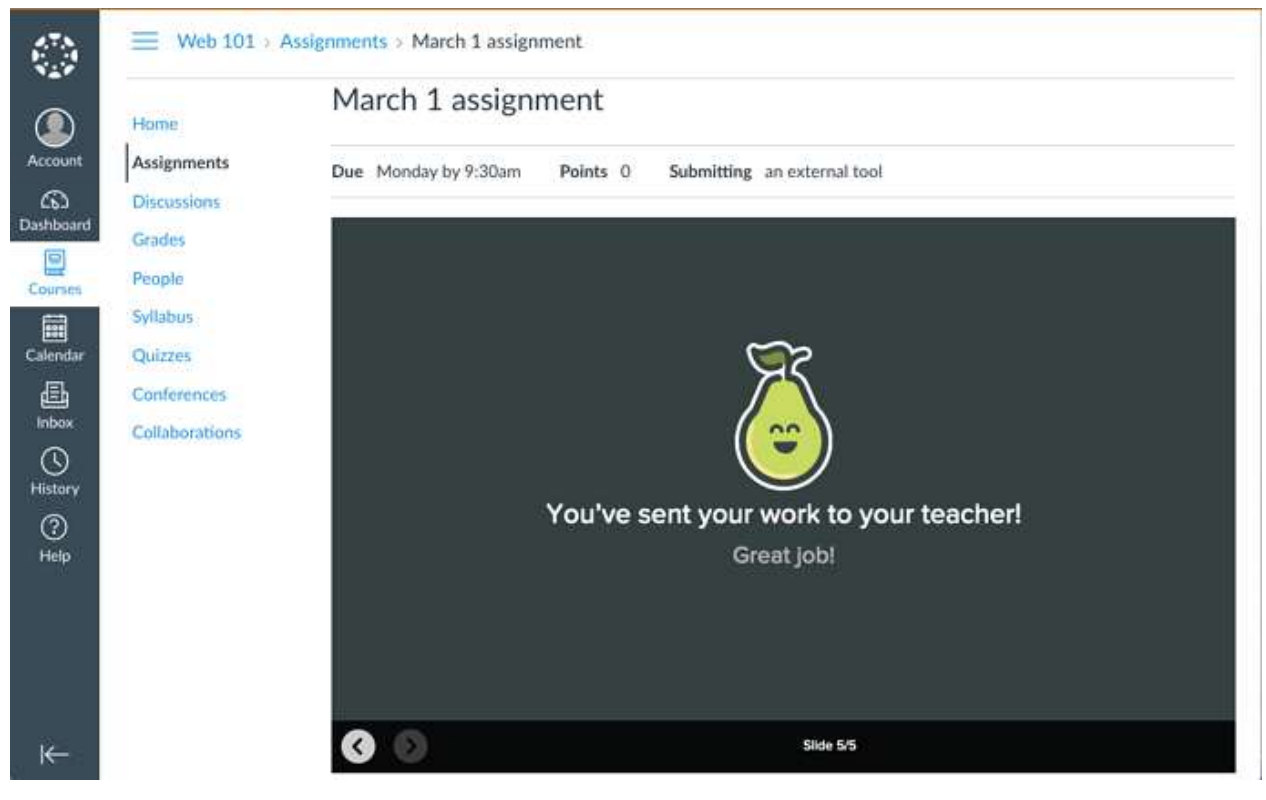
- Please note that the *Submit Work* button doesn't display in the Canvas Student View preview on the teacher's screen...



- ...but it does display on the final slide of the actual Student's View:



- After selecting *Submit Work*, you get confirmation that your work has been submitted.



Grade your assignment

In Canvas, you can manually assign points in the Gradebook, see the status of assignments for individual students, and open the Pear Deck Teacher Dashboard to view and evaluate individual responses. ⚠️ Please note that Pear Deck is not integrated with Canvas SpeedGrader at this time.

In Canvas:

1. Go to *Courses* and select your course.
2. In *Course Options*, select *Grades*. Use the Canvas tools to customize your grading options.
3. Go back to the *Courses* page, and click on the Assignment to open the [Teacher Dashboard](#). Click through the slides in the Dashboard to see the individual responses with their names (if the Projector View is open, click on the 3-dots menu to open the Dashboard in a new tab so you can see the names).
 - a. You can toggle back to the *Grades* page to adjust point values.
 - b. In the Dashboard, you can leave comments for individual students with Pear Deck [Teacher Feedback](#).

In Pear Deck:

- Open the [Teacher Dashboard](#) and click on a slide to view all of the responses you've collected on it. You can open this Dashboard View within your Pear Deck Assignment in Canvas!

The screenshot shows the Pear Deck interface. On the left, a vertical list of slides is visible. The top slide is highlighted in yellow and contains a lightbulb icon and the text: "What's something you learned from this video?". Below it are two more slides: "Try the breathing exercise from the video" and "Draw a picture of something (a place, person, animal, or something else) that makes you feel calm". The main area on the right displays three student responses in white speech bubbles. The first response is from Bailey Jackson, the second from Kaitlyn Hall, and the third is from an unnamed student. Each response includes a "LEAVE FEEDBACK" button and a star icon. At the bottom, a dark navigation bar shows "2 of 3 Responses", "Student-Paced", "Show Responses", "Stop Student-Paced", and "END".

- [Export responses to a Spreadsheet](#) (when you log into Pear Deck with Google)
- [Publish Takeaways™](#) (when you log into Pear Deck Google). Please note that when you publish Takeaways from Canvas, they are *not* automatically shared to your students! Here's how you can share these Takeaways with your students:

- Open your *Google Drive > Pear Deck > Takeaways* folder. Open the Deck folder:

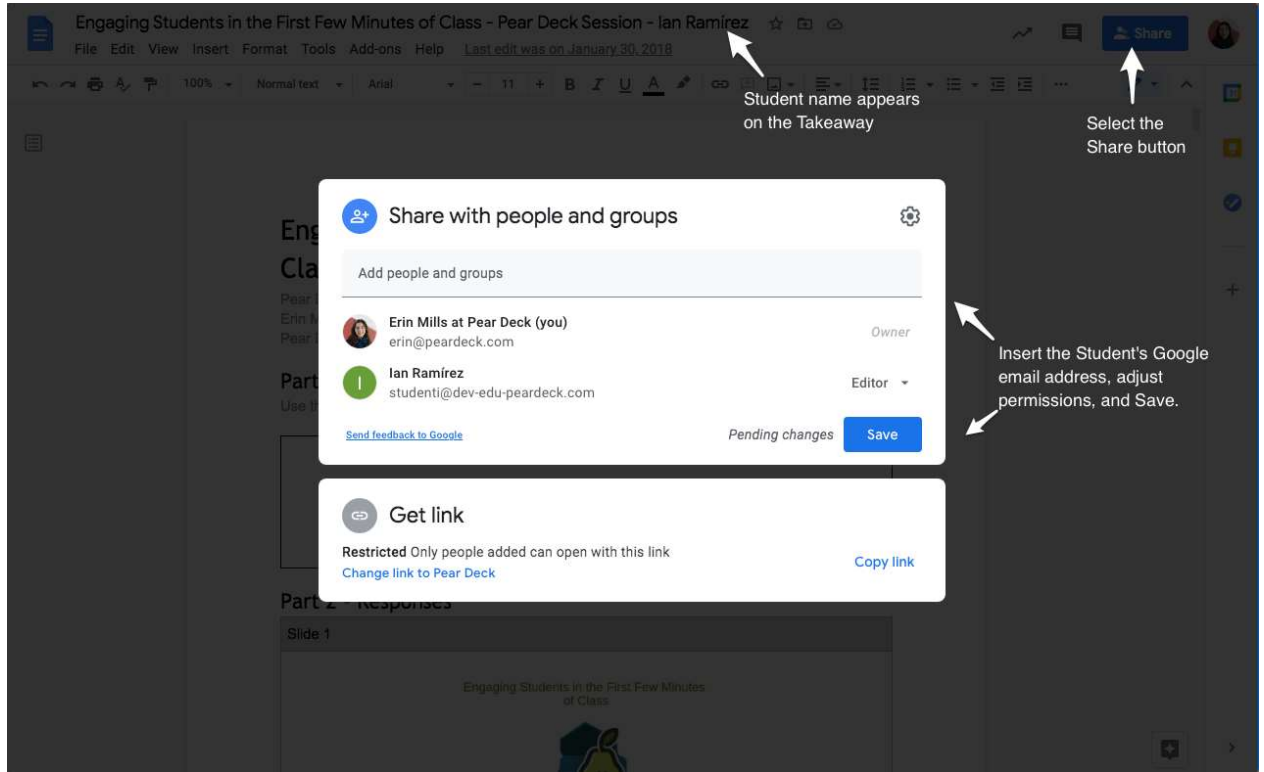
The screenshot shows a Google Drive interface. The breadcrumb path "My Drive > Pear Deck > Takeaways" is highlighted with a purple box. Below the path is a table of files:

Name ↓	Owner	Last modified
Engaging Students in the First Few Minutes of Class	me	Dec 21, 2020 me
Energy and Forces	me	Dec 21, 2020 me
En todo el mundo	me	Dec 21, 2020 me

A purple arrow points to the file "Engaging Students in the First Few Minutes of Class".

- Open the Session folder to find all of the Takeaways you published for the Session.
- Open a Takeaway Doc to see who it belongs to. Then select *Share* to share it in Drive with the student. If you want to extend the lesson, give your student editing permission

(select *Editor* next to their email address) so they can continue typing on the Doc!



- When the student's name (Ian Ramírez above) and email address appears, the Doc has been shared with the student. The student can find it in their Google Drive in the *Shared with me* section.

For questions, please email help@peardeck.com!

Article by Erin M.

Was this article helpful?

Yes

No

Related articles

[How Students Join a Pear Deck Session](#)

[Google Classroom Integration](#)

[How to Teach a Remote Lesson with Pear Deck](#)

Student Paced Lessons

Use Takeaways™ to Extend your Lesson and Give Students Feedback

P
e
a
r
D
e
c
k
K
n
o
w
l
e
d
g
e
B
a
s
e

Go to
www.peardeck.com 

